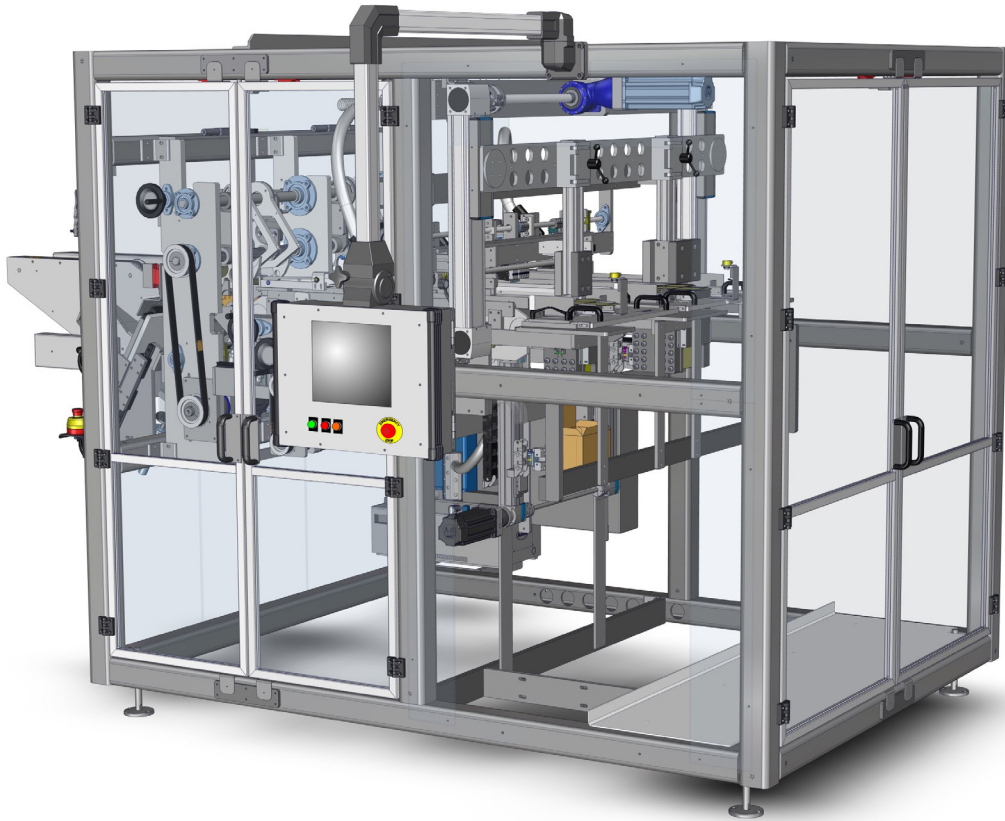


CARTON**FORMER**



**High-Speed, Flexible,
No-Tool Changeover Solution
for Carton Forming**



Graphic
Packaging
INTERNATIONAL

CARTONFORMER

The Carton Former is a flexible, high-speed, continuous motion machine designed to form cartons for hand or automatic top loading of product.

Machinery Highlights

Functional Design, Easy Access Construction

- Heavy-duty cold rolled welded steel frame made from 4" square mechanical tubing with adjustable legs.
- Clear polycarbonate interlocking hinged guard doors.

Product & Size Ranges•

- Designed to handle a full range of flat blanks for carton forming.
- Carton size range: 5" to 16" long x 4" to 8" wide x .875" to 4" deep.

Machine Features (Standard)

- Ergonomic dual two-foot powered magazine for flat carton blanks.
- Segment wheel feeder for high speed and reliable carton staging.
- Servo controlled for ease of adjustment.
- Tool less quick change plunger and cavity mounting.
- Hot melt glue system.
- No tool changeover
- Allen Bradley electrical package.
- Color touchscreen HMI and light tower for visual display of machine functions.
- Scales and dial indicators for accurate changeovers.
- External Ethernet port for convenience.

Machine Features (Optional)

- Three grades of construction are available from standard finish to a stainless steel wash-down construction.
- IQ tablet for technical manuals, parts manuals, 3D PDF Part Viewer, Dynaic Changeover Checklist with Video Guidance. Tablet includes locking mount that also serves as a dock and recharging station.
- Remote Connectivity.
- Low carton sensing.
- Closers after carton is filled.
- Alternative electrical packages.
- Casters for mobility.

Specifications

Speed

Speeds up to 60 cartons per minute for single lane and 120 cartons per minute for dual lane (depending upon product size and characteristics).

Product Configuration

- Single lane of cartons
- Dual lane of cartons

Machine Models

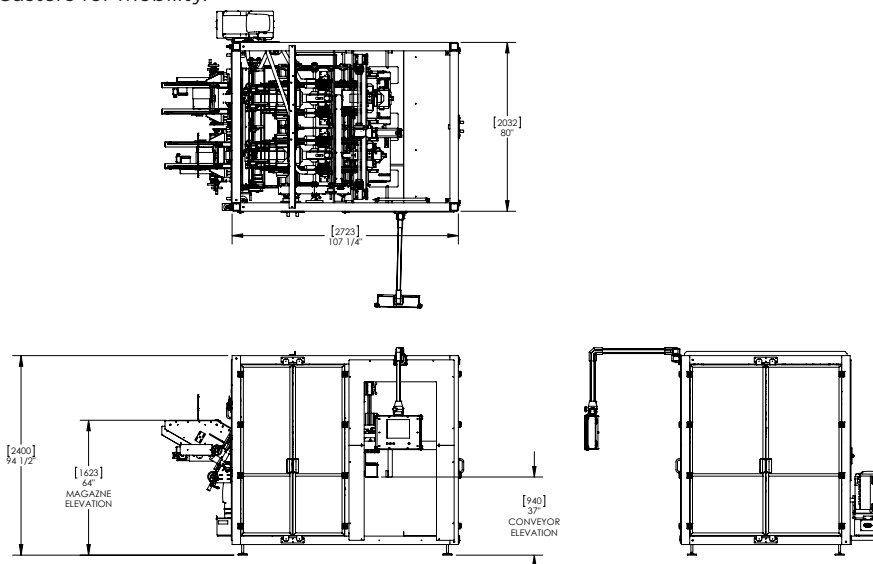
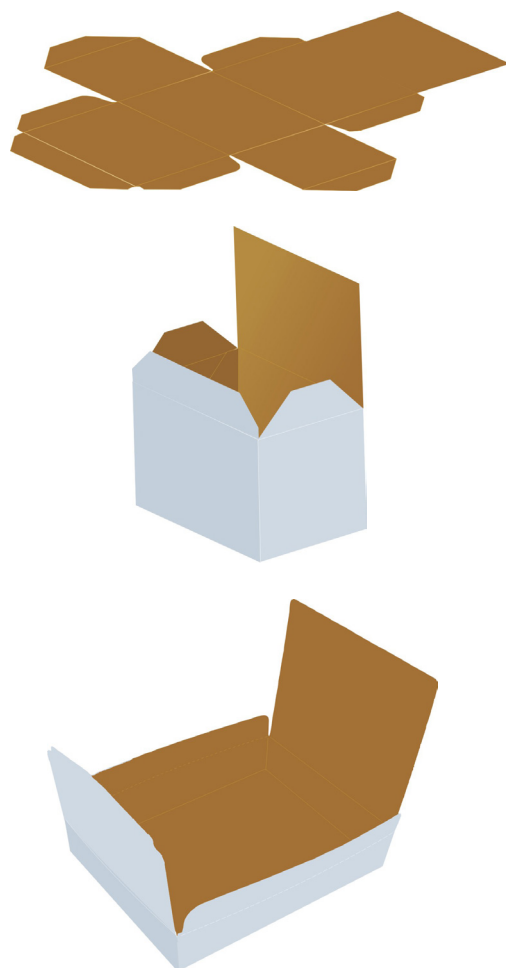
- Single lane, dual lane, and custom

Electrical

- Control Voltage: 24 VDC
- Supply Voltage: 480 VAC, Three Phase, 60 HZ

Air Requirements

- 80 psi clean/dry air supply required (equivalent to class 3 or better).
- CFM dependent on vacuum system specified.



Floor plan #5049587